



Connectivity Solutions

Complete or Partial Part #,
Competitor Part # or
Keywords.

Wireless

CATV

Audio & Video

Networking &
Structured Wiring

Military & Aerospace

Test & Measurement

Home

Member Access

Products

Connectors

Microwave Components

CATV Components

Coaxial Cable Assemblies

Structured Cabling & Connectors

Tools & Accessories

Customer Service

Request For Quote

Representatives

Distributors

Literature/Catalog Request

What's New

About Our Brands

Legal Terms

© 2007 All Rights Reserved

Product Detail



| | |
|-----------------------------|--|
| Product Line: | Johnson (Click for customer service) |
| Part Number: | 108-1081-001 |
| Description: | Banana Plug - Insulated Stacking Single Type |
| Product Family: | BANANA PLUG |
| Body Material: | Brass per QQ-B-626D |
| Breakdown Voltage: | 3500 Vrms min. |
| Color / Finish: | White |
| Contact Finish: | Nickel |
| Contact Termination: | Solder |
| Current: | 15 amps |
| Desc 2: | Single Type |
| Description: | Insulated Stacking |
| For Use With: | .166 (4.23) Banana Jack |
| RoHS Compliant: | Yes |

20070523-1523

Banana Plug - Insulated Stacking Single Type

SPECIFICATIONS

Plug Body: Brass per QQ-B-626D

Plug Spring: Nickel silver per QQ-C-585

Finish: Nickel

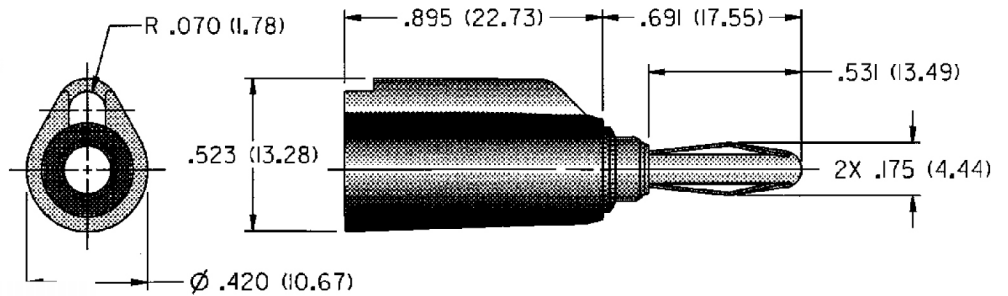
Insulated Handle: Nylon 6/6 per ASTM D4066

RATINGS

Current: 15 amps

Breakdown Voltage: 3500 Vrms minimum †

Contact Resistance: 0.010 ohms maximum



NICKEL PLATING

108-1081-001 White

For Standard Banana Jack: .166 (4.23) Diameter

FEATURES:

- Built in strain relief for long life
- Solder stud accepts up to 16 gauge wire
- Accepts standard banana plug from rear
- Nylon UL approved for self extinguishing